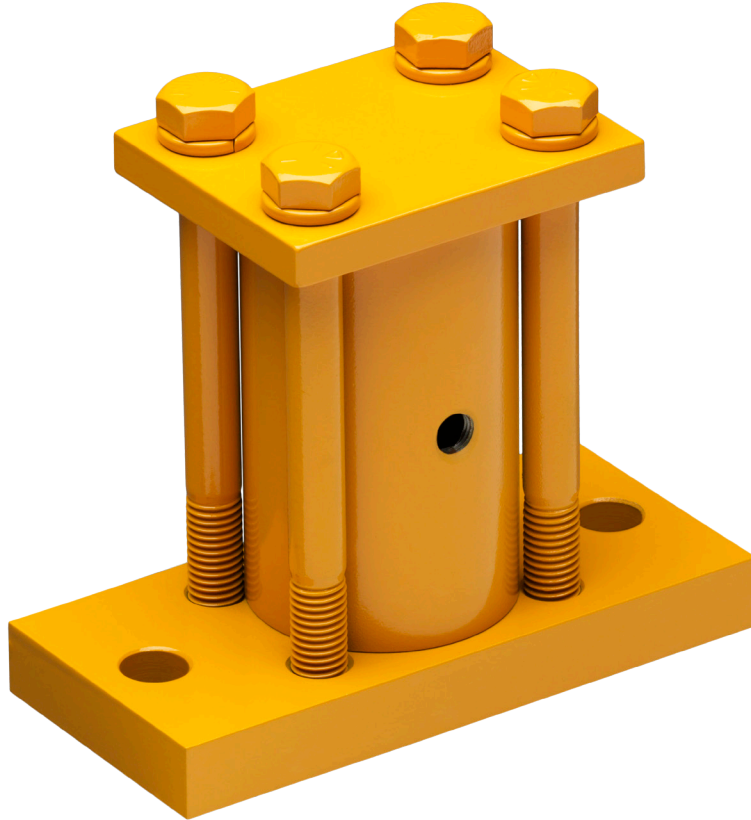


Cougar® 5000 Pneumatic Piston Vibrator Series



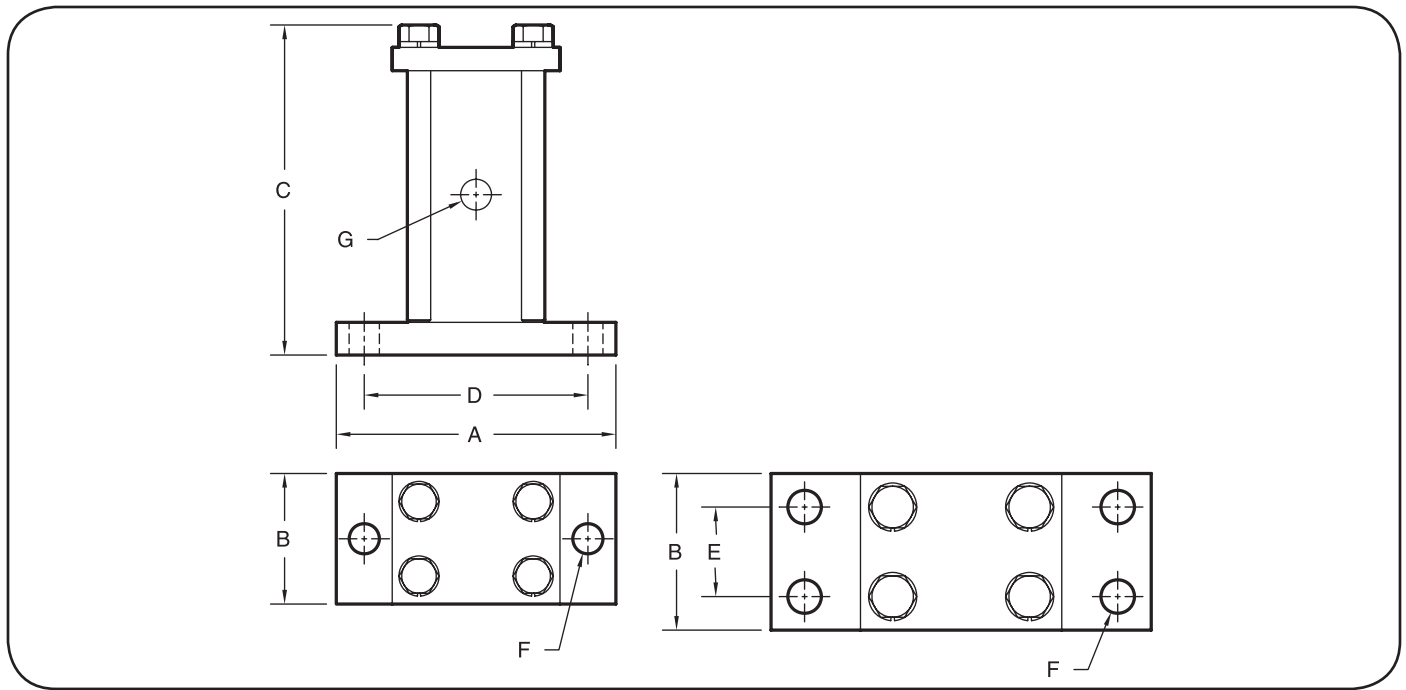
FEATURES

- Alloy steel bodies
- Hardened pistons
- Low air consumption
- Produces uniform directional force
- Optional
 - internal spring for positive starting
 - manifold/muffler for quiet operation
 - air cushioned non-impacting
 - universal mount
 - high temperature up to 400°F

Specify Cougar for:

- Cost effective solutions
- Expert technical assistance
- Complete service and support

TECHNICAL DATA SHEET



DIMENSIONS (inch)

Model	Piston Size In.	A	B	C	Bolt Pattern		Bolt Size	Port NPT	Weight lbs
					D	E	F	G	
5012/5012-AC	1 ½	7.5	3.0	7.125	6	—	¾	¼	14.50
5016/5016-AC	2	7.5	3.5	7.000	6	—	¾	¼	20.00
5016-L/5016-L-AC	2	7.5	3.5	8.750	6	—	¾	¼	24.00
5024/5024-AC	3	10.5	4.5	8.750	8 7/16	2 ½	¾	½	44.00
5024-L/5024-L-AC	3	10.5	4.5	13.125	8 7/16	2 ½	¾	½	62.00
5032/5032-AC	4	10.5	5.5	11.625	8 7/16	2 ½	¾	½	69.25
5032-L/5032-L-AC	4	10.5	7.0	16.500	8 7/16	2 ½	¾	½	99.00

PERFORMANCE DATA

Model	Piston Size In.	40 PSI		60 PSI		MAX 80 PSI	
		VPM	CFM	VPM	CFM	VPM	CFM
5012	1 ½	2800	5.3	3500	8.1	4100	10.9
5016	2	2600	11.0	3900	16.1	4100	20.9
5016-L	2	1400	6.8	2600	12.8	3500	19.7
5024	3	2100	10.2	2600	16.7	3000	22.4
5024-L	3	850	13.6	1000	24.7	1250	35.9
5032	4	1200	19.1	1700	31.8	1900	40.3
5032-L	4	700	20.4	950	31.9	1100	40.4

Model	Piston Size In.	40 PSI		60 PSI		MAX 80 PSI	
		VPM	CFM	VPM	CFM	VPM	CFM
5012-AC	1 ½	2350	6.2	2900	6.9	3400	10.9
5016-AC	2	2250	6.8	2750	9.5	3200	12.5
5016-L-AC	2	1400	9.5	1700	14.3	2200	17.9
5024-AC	3	2000	9.6	2100	15.2	2400	21.6
5024-L-AC	3	780	17.1	900	27.9	1200	35.9
5032-AC	4	1200	13.7	1350	23.9	1700	35.9
5032-L-AC	4	650	20.5	750	27.9	900	35.9